

# RÜZGAR KIRICI - MONTAJ ŞEMASI

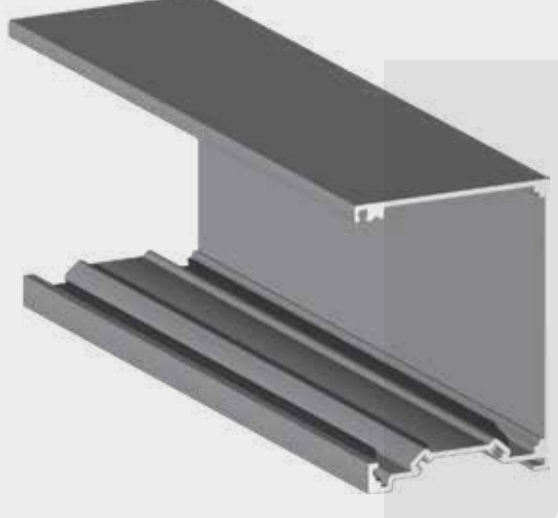
## WIND BREAKER - Installation Scheme



# SÜRME CAM BALKON ALÜMİNYUM PROFİLLERİ

## Sliding Glass System - Profiles

### MOTORLU RÜZGAR KIRICI



#### Şase

Main Box Profile

Ürün Kodu / Code : AP-RK-401

Weight kg/m: 3,335 kg/m

En x Boy x Kalınlık: W:116,5 x H:147,5



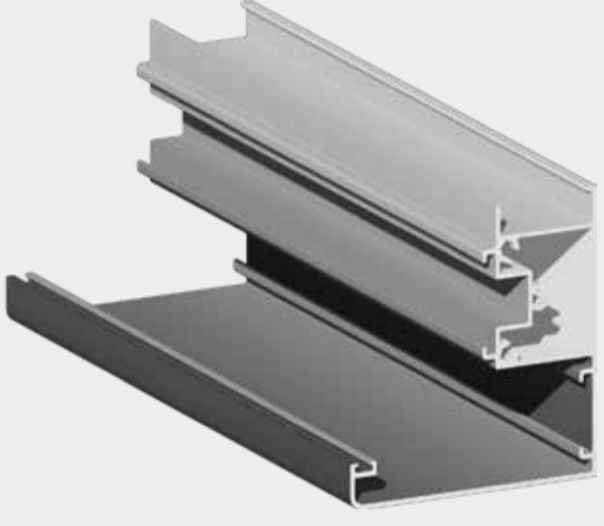
#### Şase Kapak

Main Box Cover Profile

Ürün Kodu / Code : AP-RK-402

Weight kg/m: 0,915 kg/m

En x Boy x Kalınlık: W:18,6 x H:143,1



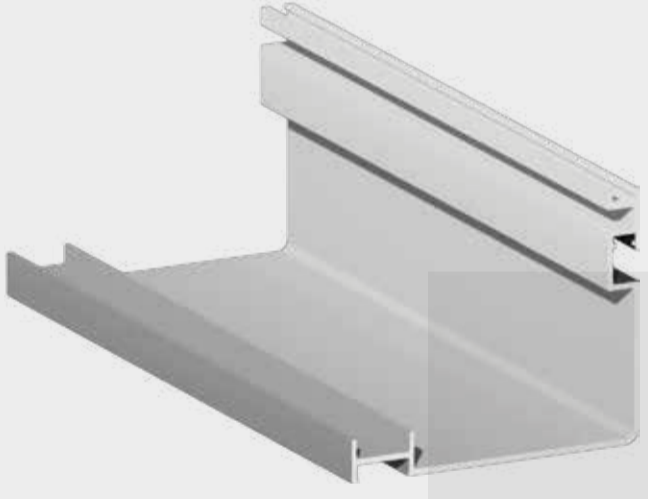
#### Dikme (Motorlu)

Vertical Profile

Ürün Kodu / Code : AP-RK-403

Weight kg/m: 1,775 kg/m

En x Boy x Kalınlık: W:94 x H:94



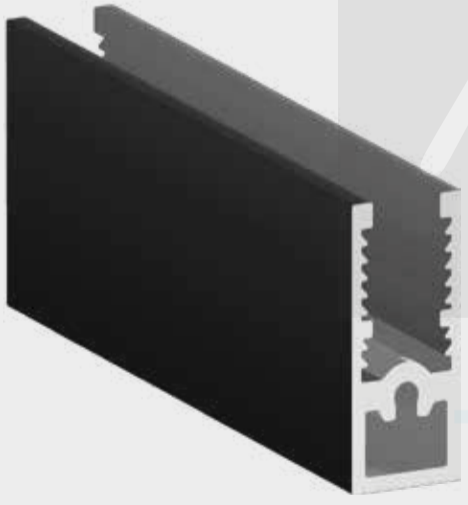
#### Dikme Kapak (Motorlu)

Vertical Cover Profile

Ürün Kodu / Code : AP-RK-404

Weight kg/m: 0,904 kg/m

En x Boy x Kalınlık: W:90 x H: 68



#### Alt Baza

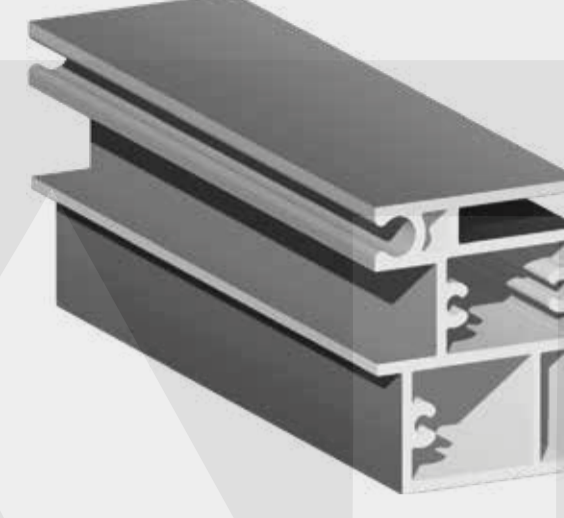
Base Profile

Ürün Kodu / Code : AP-RK-405

Weight kg/m: 0,400 kg/m

En x Boy x Kalınlık: W:13,2 x H:30

### MANUEL RÜZGAR KIRICI



#### Hareketli Dikme/Yatay

Moveable Glass Profile

Ürün Kodu / Code : AP-RK-411

Weight kg/m: 1,592 kg/m

En x Boy x Kalınlık: W:41,5 x H:50



#### Sabit Yatay

Fixed Horizontal Profile

Ürün Kodu / Code : AP-RK-412

Weight kg/m: 1,210 kg/m

En x Boy x Kalınlık: W:30 x H:52,3



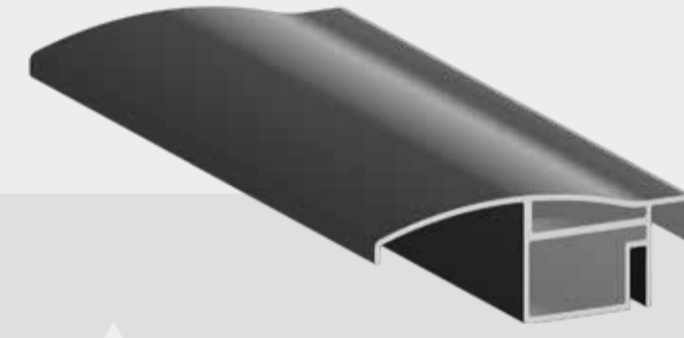
#### Sabit Dikme

Fixed Vertical Profile

Ürün Kodu / Code : AP-RK-413

Weight kg/m: 2,067 kg/m

En x Boy x Kalınlık: W:47 x H:94,8



#### Rüzgar Kırıcı Küpeşte

Handrail Profile

Ürün Kodu / Code : AP-RK-414

Weight kg/m: 1,917 kg/m

En x Boy x Kalınlık: W:129,2 x H:43,1



#### Ağırlık Profili

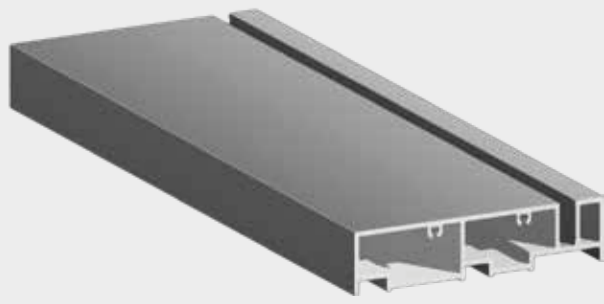
Weight Profile

Ürün Kodu / Code : AP-RK-415

Weight kg/m: 1,711 kg/m

En x Boy x Kalınlık: W:30 x H:150

### PİSTONLU RÜZGAR KIRICI



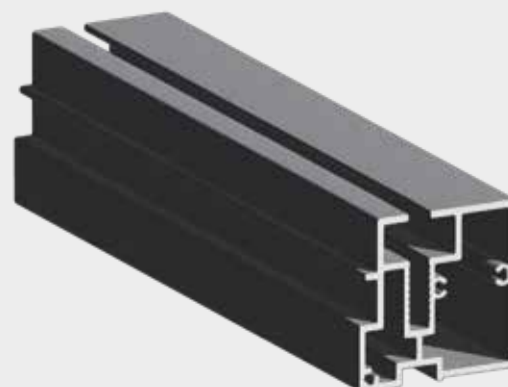
#### Pistonlu Sabit Yatay

Fixed Horizontal Profile

Ürün Kodu / Code : AP-RK-431

Weight kg/m: 1,344 kg/m

En x Boy x Kalınlık: W:101 x H:22



#### Pistonlu Hareketli Dikme

Moveable Glass Profile

Ürün Kodu / Code : AP-RK-432

Weight kg/m: 1,459 kg/m

En x Boy x Kalınlık: W:50 x H:46,6



#### Pistonlu Sabit Dikme

Fixed Vertical Profile

Ürün Kodu / Code : AP-RK-433

Weight kg/m: 2,718 kg/m

En x Boy x Kalınlık: W:66,5 x H:100

# MANUEL WIND BREAKER

## A) System General Technical Specifications:

The system consists of two wings, one fixed and one movable. The operation of the system is facilitated by movable pulleys and steel cables. Each movable wing utilizes 2 wheels, with steel screws and nuts used in the wheels. All connection elements used in the system are stainless. For the operation of the system, there are 2 iron weights with dimensions of 10\*80 concealed within the weight profiles. The dimensions of the system are 2000 mm in width and 1760 mm in height.

## B) Profile Specifications:

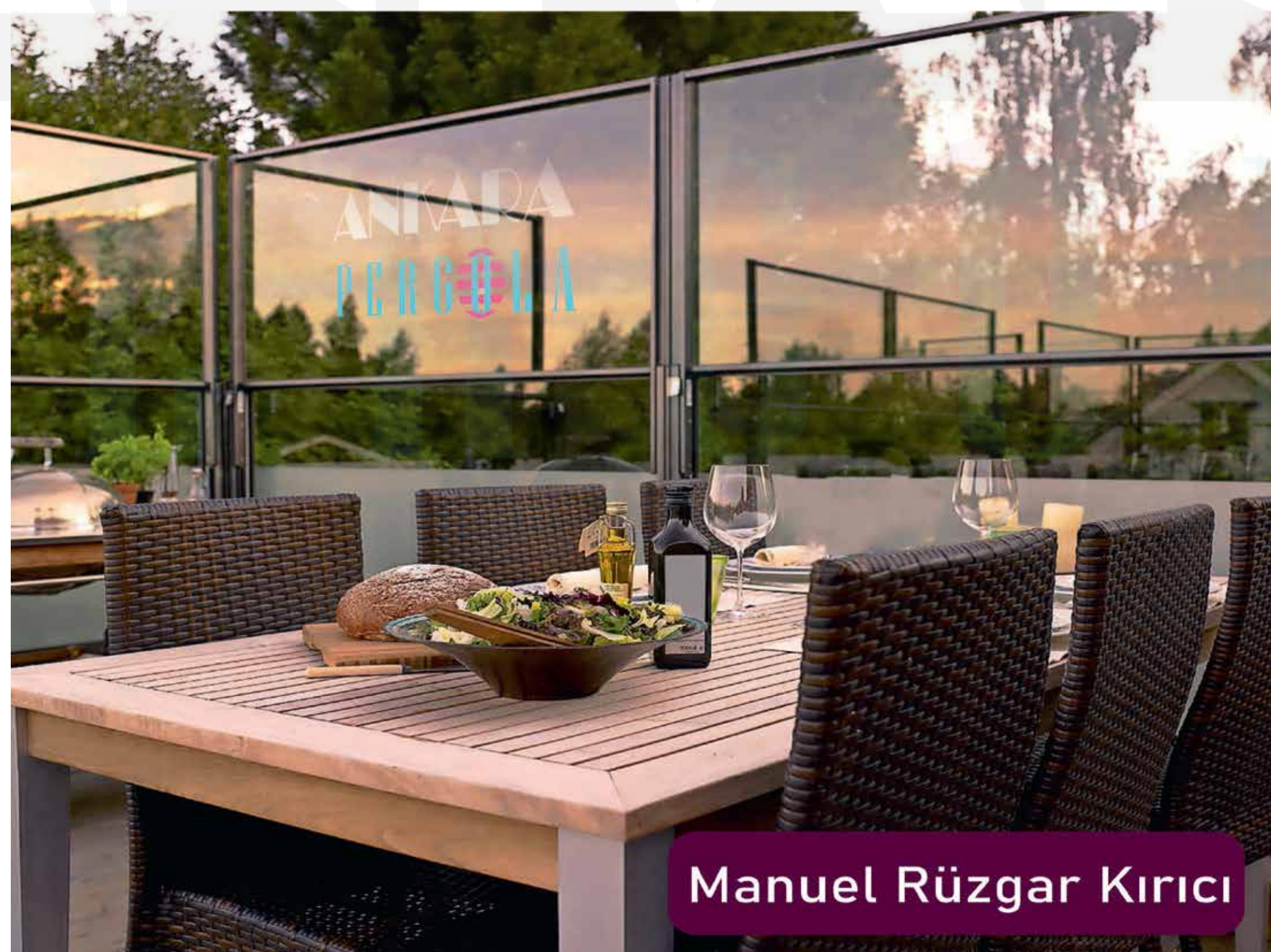
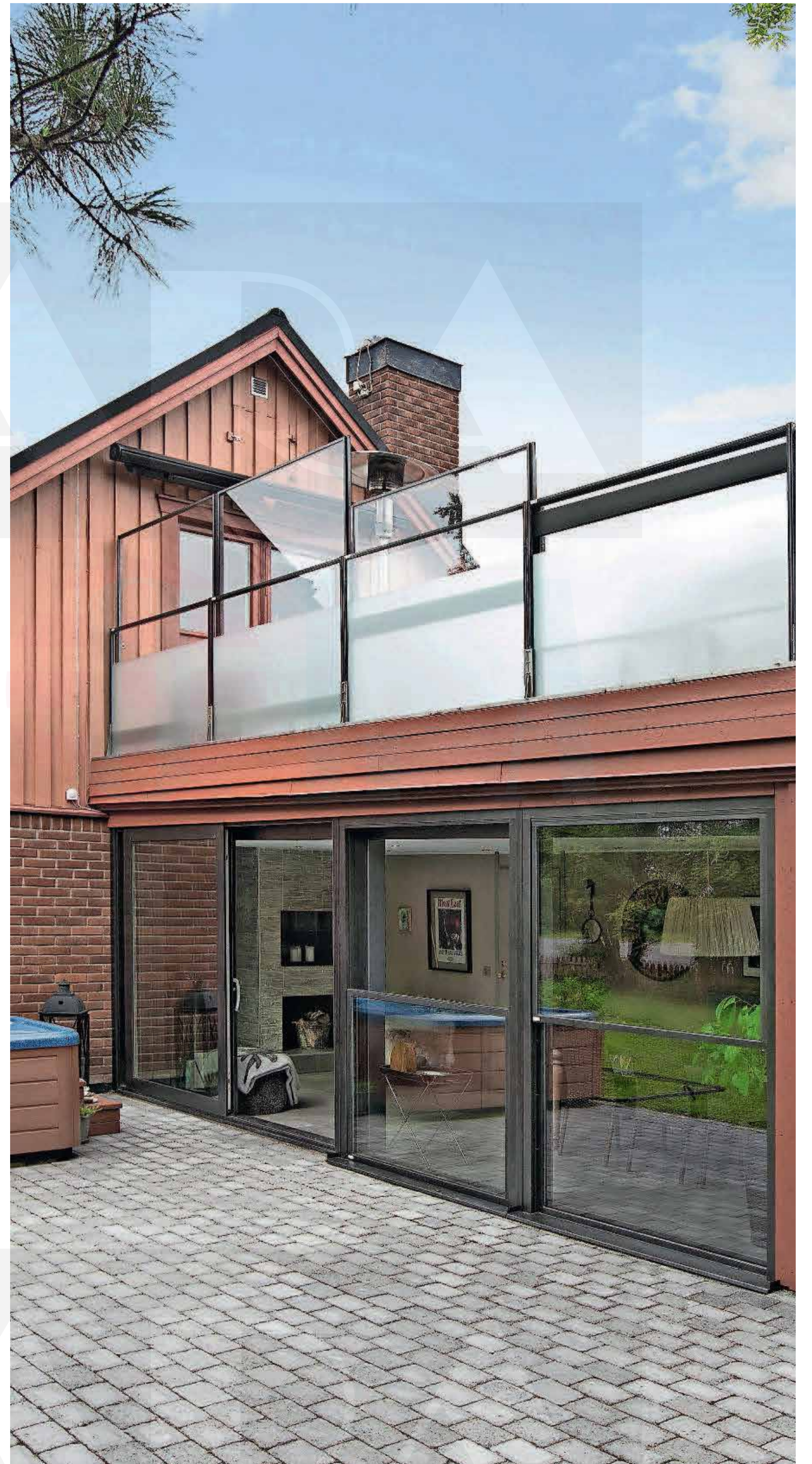
Aluminum profiles are painted with electrostatic powder coating in the desired RAL code.

## C) Pot Specifications:

The pot is 300 mm wide. It is made of galvanized corrugated sheet metal and painted with electrostatic powder coating in the desired RAL code.

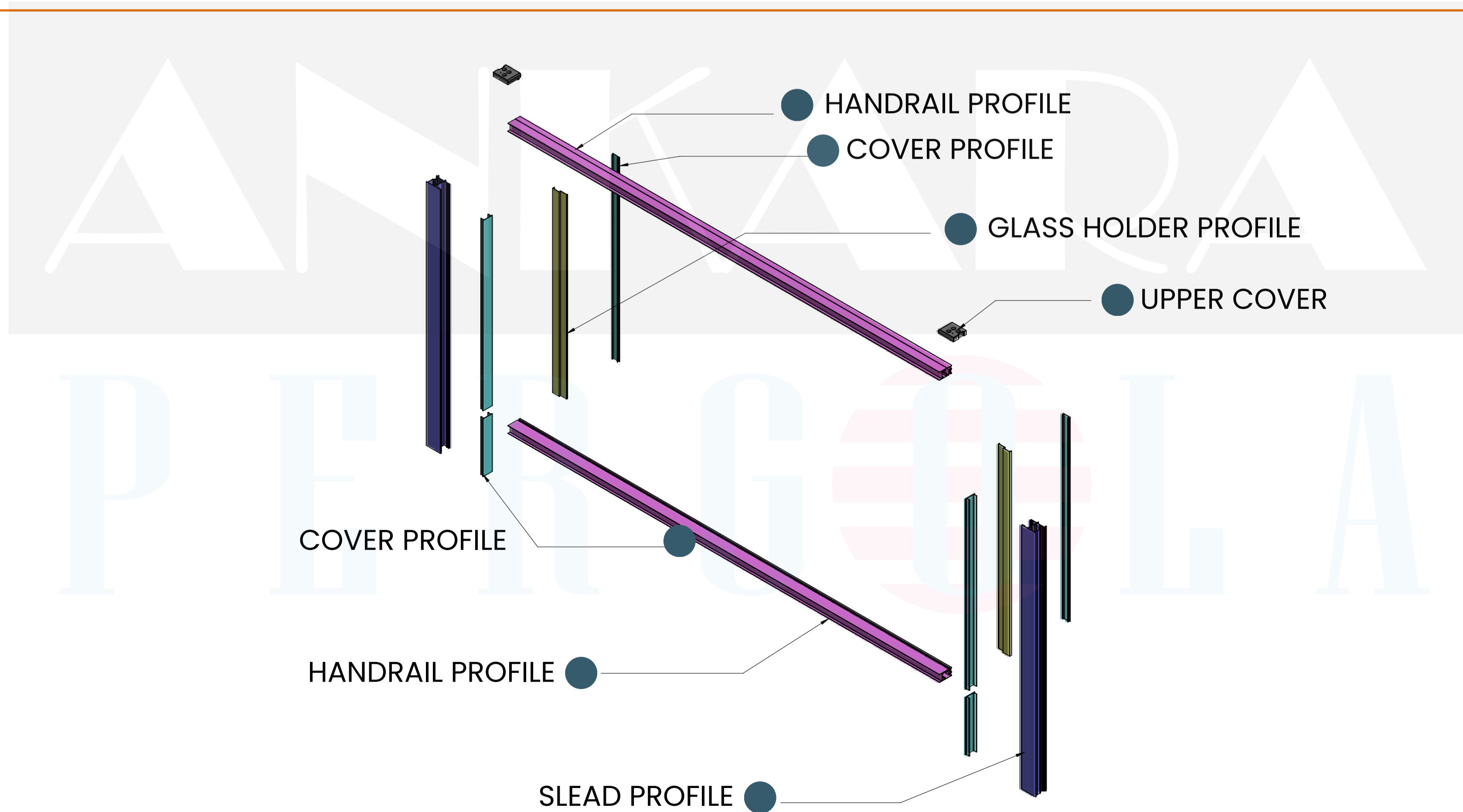
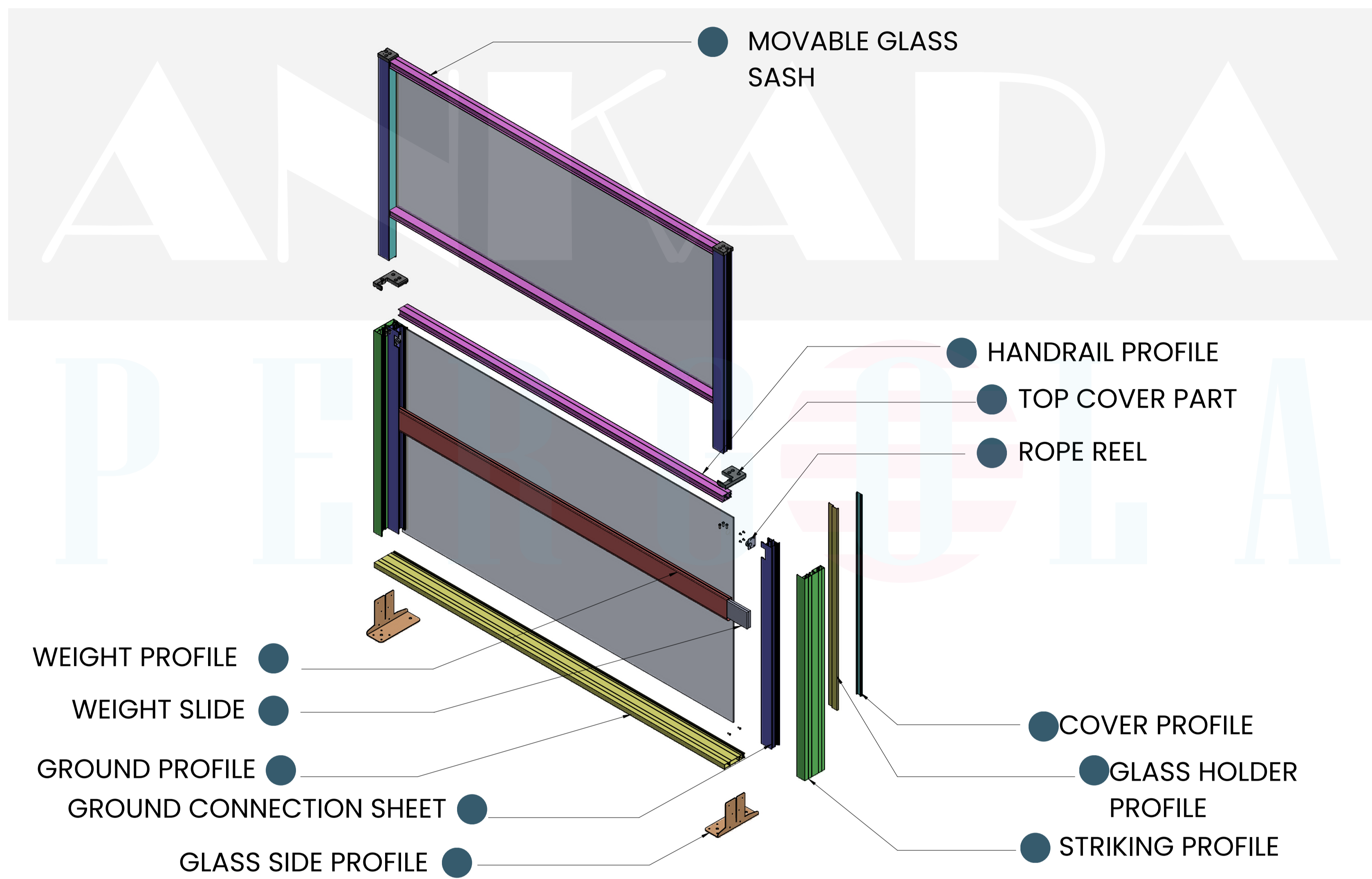
## D) Glass Details:

Tempered glass with a thickness of 6 mm is used in the system.



Manuel Rüzgar Kırıcı

# EXPLODED VIEW / MANUEL



# WIND BREAKER WITH PISTON

## A) System General Specifications:

The system consists of two wings, one fixed and one movable. Two gas pistons are used to operate the movable wing. All connection elements used in the system are stainless. Optionally, pot and wheels can be added.

## B) Profile Specifications:

Aluminum profiles are painted with electrostatic powder coating in the desired RAL code.

## C) Pot Specifications:

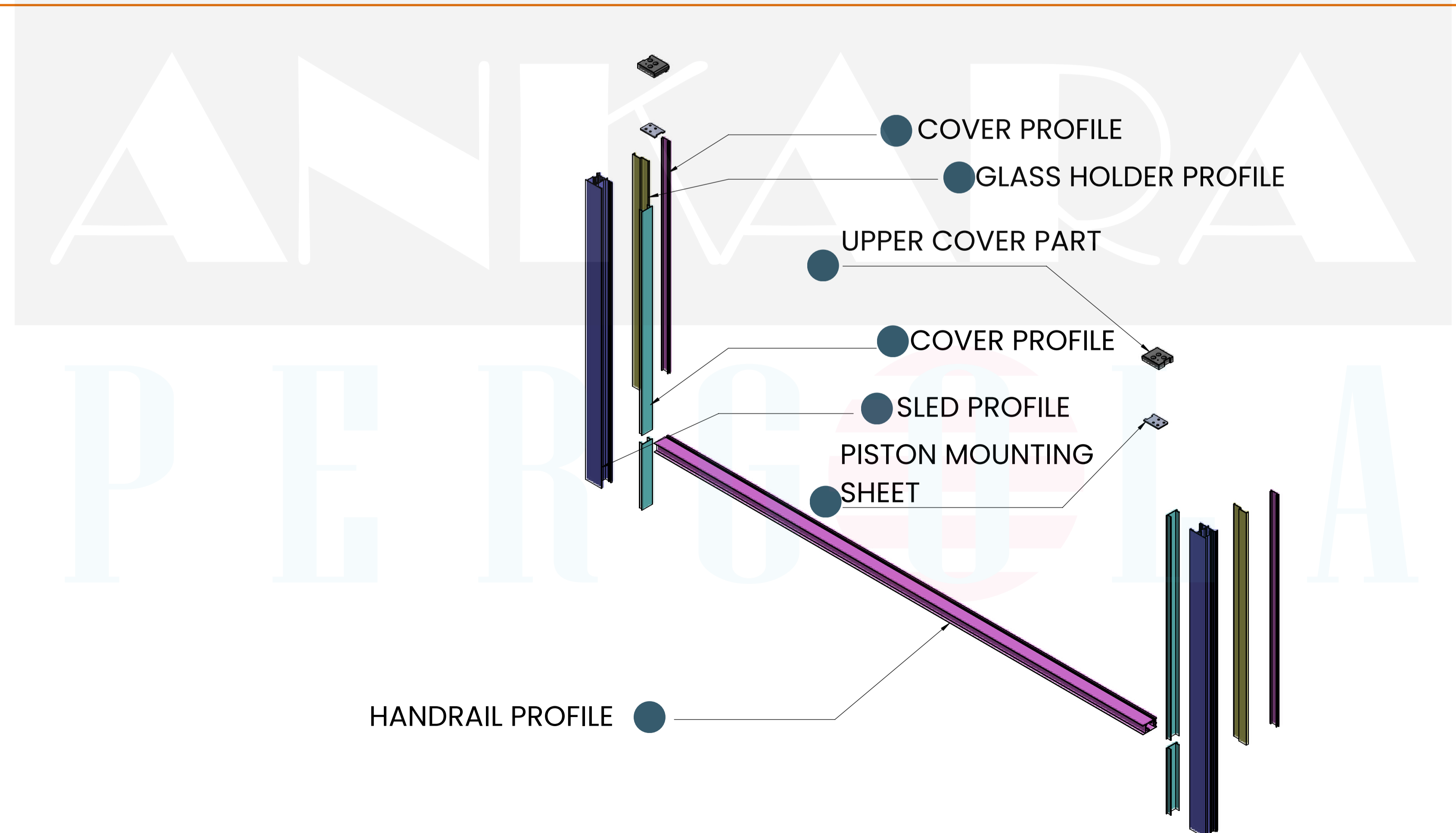
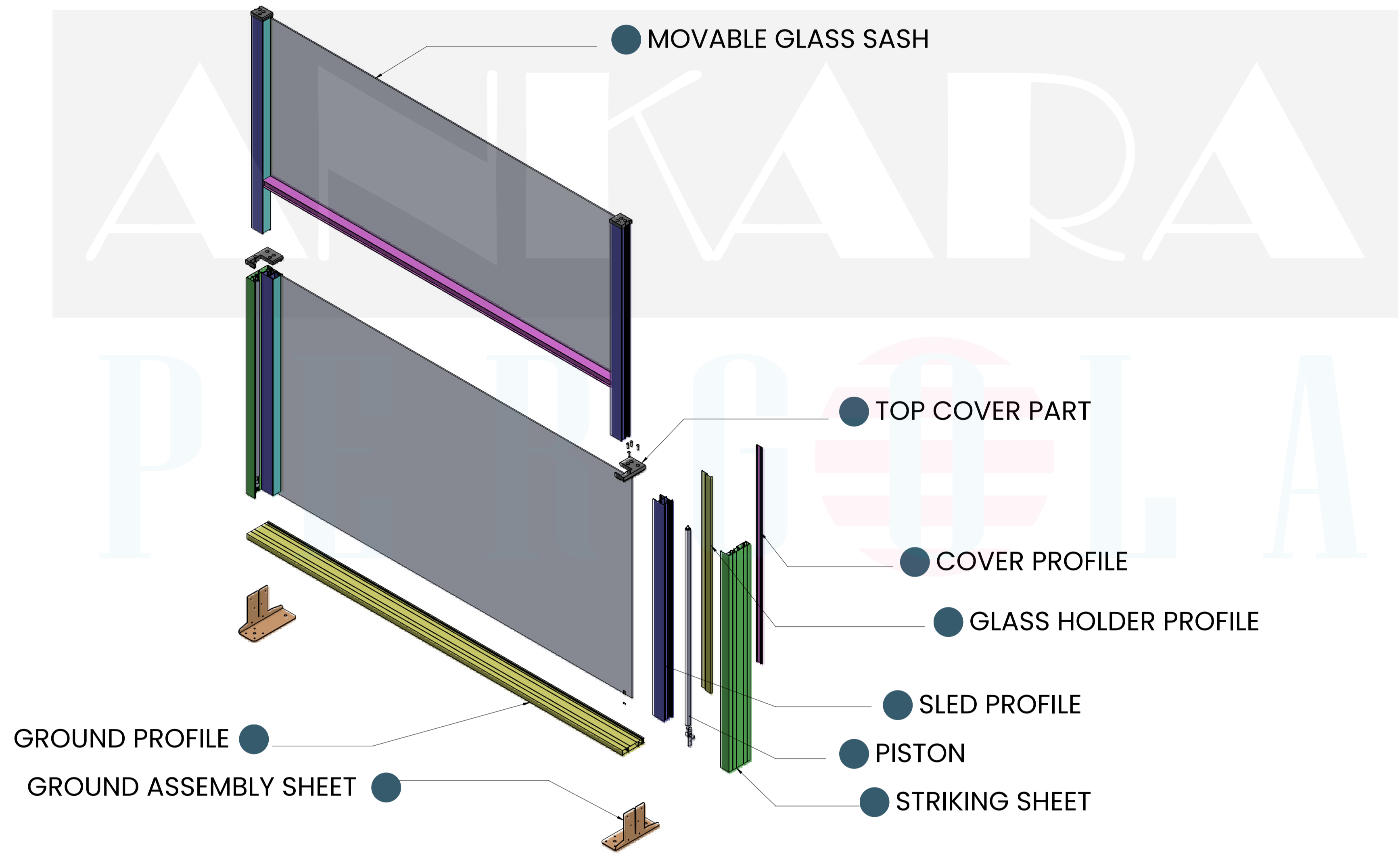
The pot is 300 mm wide. It is made of galvanized corrugated sheet metal and painted with electrostatic powder coating in the desired RAL code.

## D) Glass Details:

Tempered glass with a thickness of 5 mm is used in the system.



# EXPLODED VIEW / PISTON



# WINDBREAKER MOTORIZED

## A) System General Specifications:

The system consists of two wings, one fixed and one movable. There is one tube motor located in the lower chassis to operate the movable wing. All connection elements used in the system are stainless. Pot and wheels can be optionally added.

## B) Profile Specifications:

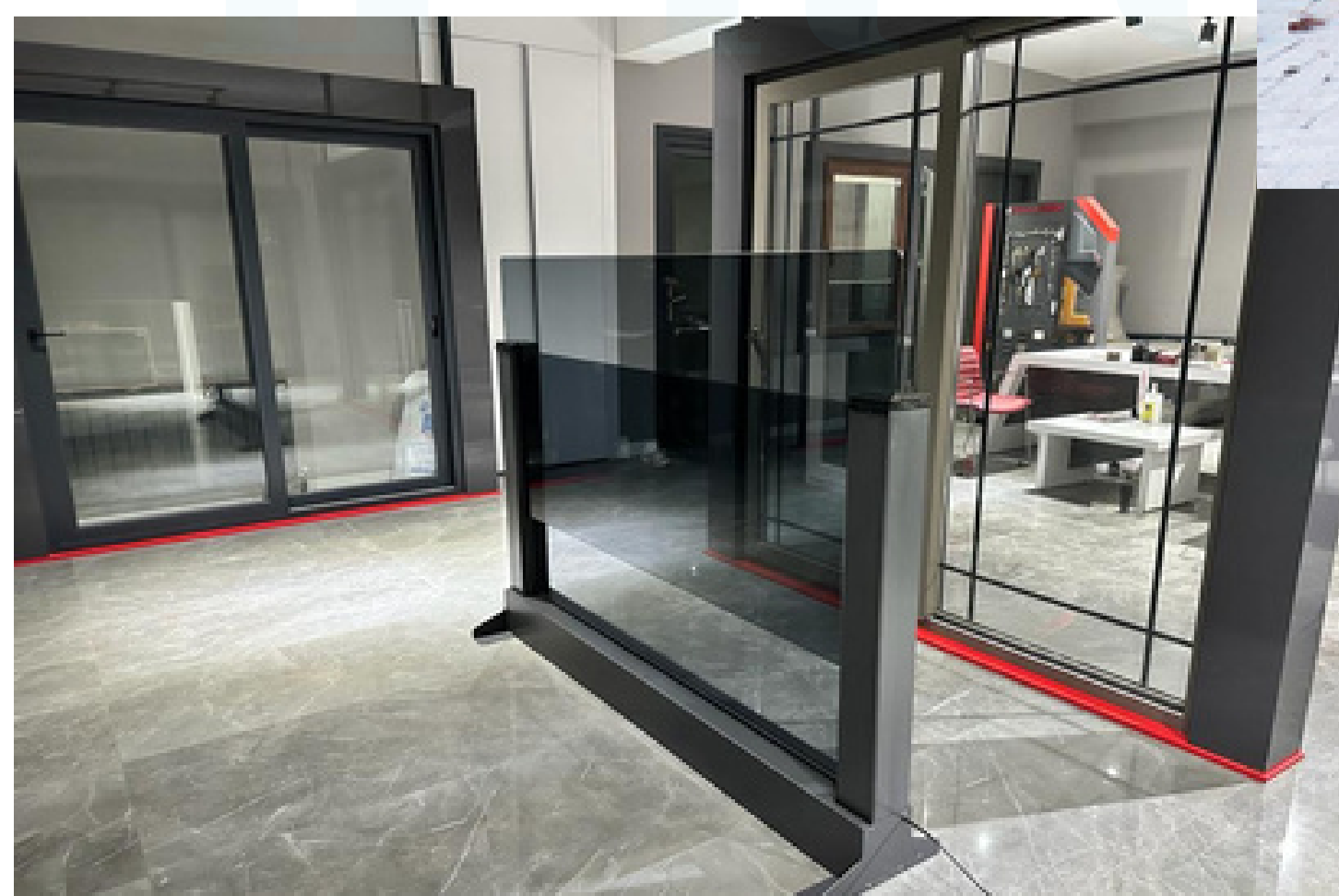
Aluminum profiles are painted with electrostatic powder coating in the desired RAL code.

## C) Pot Specifications:

The pot is 300 mm wide. It is made of galvanized corrugated sheet metal and painted with electrostatic powder coating in the desired RAL code.

## D) Glass Details:

Tempered glass with a thickness of 8-10 mm is used in the system.



# EXPLODED VIEW /MOTORIZED

